

My Power Planner

From

<http://switchon.vic.gov.au>

PowerPoint

by

Nalin Sharda

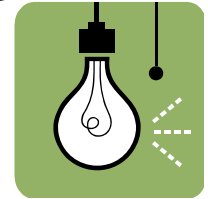
Overview

- **Introduction**
- **Features**
- **Flexible Pricing**
- **Considerations**
- **My Power Planner**
 - Create your 'Power Profile'
 - Explore your electricity usage
 - Compare offers
 - Shift your time of use
- **Where to use My Power Planner**
- **Important information**
- **Q & A**



Introduction

- My Power Planner is an easy-to-use interactive **price comparison tool**
- that is available on the Victorian Government's **Switch On website**
 - (www.switchon.vic.gov.au).
- My Power Planner can help you to **understand** how the new **flexible** electricity **pricing** options could work for you,
- allow you to **make an informed decision** regarding the choice between flexible pricing and flat rates.



Features



- Spend 15 minutes or so with My Power Planner and you'll be **able to**:
 - **create** your own personal **power profile** to understand how you use electricity
 - **compare** your current **retail plan** with other retail **offers**, including new flexible prices
 - **explore** how **shifting** the **time** of day **you use electrical appliances** can lead to savings under flexible pricing.



Flexible Pricing

- Victorians are now able to **choose between flat rates** and new **flexible** electricity **pricing**.
- Flexible pricing means **different rates** for electricity **at different times** of the day.
- You **don't have to switch** to flexible pricing – **the choice is yours**.



When considering flexible pricing

- It's important to get an **understanding** of whether **flexible pricing is appropriate** for you before deciding to move from your current electricity plan.
- Easy to **follow** information and helpful **online tools** that explain how flexible pricing works are available at the
- Switch On **website** (switchon.vic.gov.au).



Flexible pricing is optional

- **You can stay** on your current rate.
- **You can only move** to a flexible pricing plan **if you give your written or verbal consent** to an electricity retailer.
- **Make sure you are informed** about the new flexible pricing options before agreeing to change to a new offer.



Flexible pricing is optional



- If you change to a flexible pricing offer and stay with the **same electricity retailer**, you can change back to your old plan as long as you decide to move back **before March 2015**. Some **fees may apply**
 - visit switchon.vic.gov.au for more details.
- If you have **solar power**, are already on a **time-of-use plan**, or have a dedicated appliance tariff, visit switchon.vic.gov.au to see how flexible pricing would affect you.
- If you are currently on an electricity **concession or retailer hardship program**, talk to your retailer to ensure you understand **if** these **concessions will still apply** with a flexible pricing plan.



My Power Planner

1. Create your 'Power Profile'

Use your electricity bill, or your electricity bill and your Smart Meter data, to create your own Power Profile.



My Power Planner

2. Explore your electricity usage

View your electricity usage by kilowatt hours (and cost) across days, weeks, months and seasons.



My Power Planner

3. Compare offers

Compare your current electricity rate against other offers relevant to you.

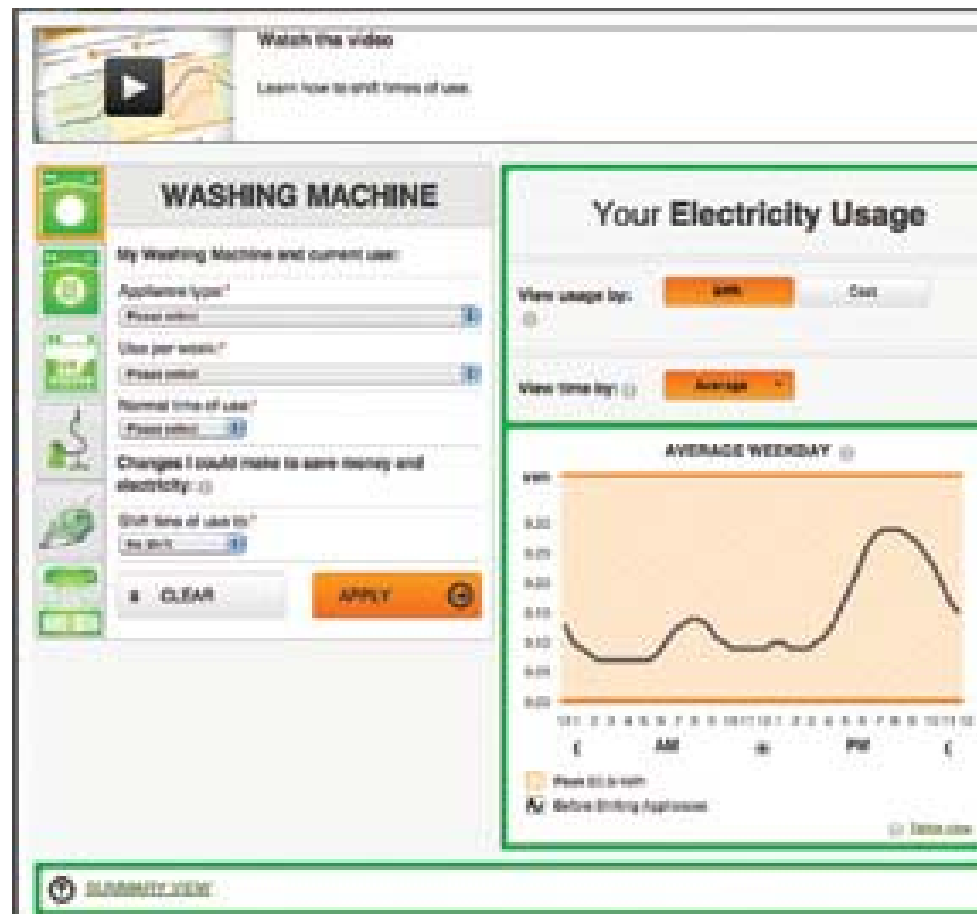
The screenshot shows the 'My Power Planner' interface. At the top, there are three navigation buttons: 'CREATE YOUR POWER PROFILE', 'EXPLORE YOUR USAGE', and 'COMPARE OFFERS' (which is highlighted in green). Below this is a header for 'Electricity Offers From Retailers In Postcode 3046 - Jemena'. A note states: 'Based on your annual consumption of 2,500 kWh, these retail offers may be a good fit for you.' Below the note is a section titled 'Available offers' which includes a search bar, a 'Update available offers' button, and a 'Table key' legend. The legend indicates that a red background represents 'Your current plan' and a green background represents 'Available offers'. The main table lists three offers:

Retailer	Offer name	Annual estimate	Annual estimate less non-conditional discounts	Annual estimate less all discounts	Incentives	Offer type*	Terms	Pop up to 3
Retailer 1	Flex - Call Load (Jemena) (20/4/2014)	\$280	\$280	\$280	No	Flexible Pricing	2 year fixed term	
Retailer 2	VE Flex - Flex Load 1 (20/4/2014)	\$270	\$270	\$270	No	Flexible Pricing	No fixed term	
Retailer 3	Energy TDU Offer - Green Rewards (20/4/2014)	\$270	\$260	\$260	No	Flexible Pricing	2 year fixed term	

My Power Planner

4. Shift your time of use

See if you could save on a flexible pricing plan by shifting the time you use your major appliances.



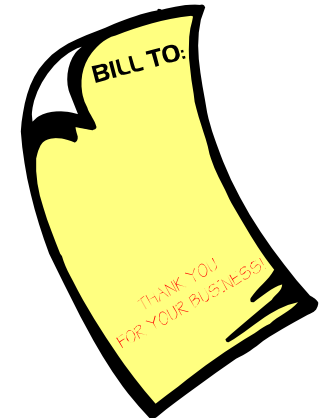
My Power Planner

Where to use My Power Planner

- **computer**
- **tablet device**
 - own
 - those of a friend
 - family member
 - your local library
 - neighbourhood house



My Power Planner



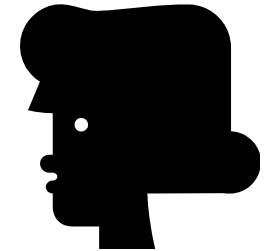
Important information

- To create your **'Power Profile'** within My Power Planner you'll need to input information from your **recent electricity bill**,
- so have one handy when you visit the **switchon.vic.gov.au** website to use the tool.



Flexible Pricing Profiler

- The Flexible Pricing Profiler is **another tool** located on the Switch On website that will
- help you understand **how flexible pricing works,**
- and how it could **help you save.**





Or is it?